

**KONG** spa  
Via XXV Aprile, 4 (zona industriale)  
I - 23804 MONTE MARENZO (LC) - ITALY  
Tel +39 0341630506 - Fax +39 0341641550  
www.kong.it

company of BONAITI group: connectors since 1830



certified UNI EN ISO 9001:2000

## DICHIARAZIONE DI CONFORMITA' CE

Il fabbricante

**KONG S.p.A. - Via XXV Aprile, 4 - 23804 Monte Marenzo LC - Italia**

dichiara che il nuovo Dispositivo di Protezione Individuale (DPI)

**"ERGO" kl versioni straight - bent - screw**

✓ è conforme alle disposizioni della Direttiva 89/686/CEE e alle norme nazionali che recepiscono le norme armonizzate EN 12275 - EN 362,

✓ è identico al DPI oggetto dell'attestato di certificazione CE n. P5 04 10 23385 124 rilasciato da TÜV PRODUCT SERVICE GMBH (n. 0123) - Riedlerstrasse 65 - D-80339 München - (Deutschland),

✓ è sottoposto alla procedura prevista all'articolo 11, punto B della Direttiva 89/686/CEE, sotto il controllo dell'organismo notificato ITALCERT (n. 0426) - V.le Sarca, 336 - 20126 Milano - (Italia).

## EC DECLARATION OF CONFORMITY

The manufacturer

**KONG S.p.A. Via XXV Aprile, 4 - 23804 Monte Marenzo LC - Italy**

declares, that the new Personal Protective Equipment (PPE)

**"ERGO" kl versioni straight - bent - screw**

✓ is in conformity with the provisions of Council Directive 89/686/EEC and with the national standards transposing harmonized standards EN 12275 - EN 362,

✓ is identical with PPE which is the subject of EC certificate of conformity no P5 04 10 23385 124 issued by TÜV PRODUCT SERVICE GMBH (n. 0123) - Riedlerstrasse 65 - D-80339 München - (Deutschland),

✓ is subject to the procedure set out in article 11 point B of Directive 89/686/EEC, under the supervision of the notified body ITALCERT (n. 0426) - V.le Sarca, 336 - 20126 Milano - (Italia)

## DÉCLARATION DE CONFORMITÉ CE

Le fabricant

**KONG S.p.A. - Via XXV Aprile, 4 - 23804 Monte Marenzo LC - Italia**

déclare que l'EPI neuf décrit ci-après

**"ERGO" kl versioni straight - bent - screw**

✓ est conforme aux dispositions de la directive 89/686/CEE et, le cas échéant, à la normes nationales transposant les normes harmonisées EN 12275 - EN 362,

✓ est identique à l'EPI ayant fait l'objet de l'attestation «CE» de type n° CE n. P5 04 10 23385 124 délivrée par TÜV PRODUCT SERVICE GMBH (n. 0123) - Riedlerstrasse 65 - D-80339 München - (Deutschland),

✓ est soumis à la procédure visée à l'article 11 partie B de la directive 89/686/CEE, sous le contrôle de l'organisme notifié ITALCERT (n. 0426) - V.le Sarca, 336 - 20126 Milano - (Italia).

Monte Marenzo, 26 novembre 2004

**KONG S.p.A.**  
Il Direttore Generale  
Dr. Marco Bonaiti



Product Service

# EC-Type Approval Certificate

No. P5 04 10 23385 124

**Holder of Certificate: Kong S.p.A.**

Via XXV Aprile, 4 (ZI)  
24030 Monte Marenzo (BG)  
ITALY

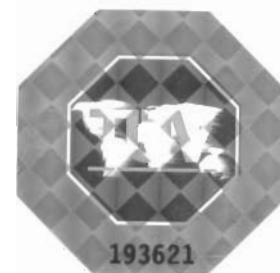
**Product:**

**PPE for protection against fall from height  
Connector type ERGO in the versions  
Straight, Bent and Screw**

This EC-Type Approval Certificate is issued according to Article 8, A, paragraph 4 (PPE of category 3) of Council Directive 89/686/EEC for personal protective equipment. It confirms that the listed product fulfills the basic requirements of the Directive. This certificate refers only to the sample submitted to TÜV PRODUCT SERVICE GMBH for testing and certification and on its technical documentation. See also notes overleaf.

Test report no.:

70077007



Date, 2004-10-18

TÜV PRODUCT SERVICE GMBH is Notified Body according to Council Directive 89/686/EEC for personal protective equipment, notified by publication in the Official Journal of the EC No. C 203/44 dated July 07<sup>th</sup>, 1994 with identification No. 0123.

Page 1 of 3



Product Service

EC-Type Approval Certificate  
No. P5 04 10 23385 124

Model(s): Connector type ERGO  
in the versions: -Straight  
-Bent  
-Screw

Parameters:

Type:  
Connector ERGO, type B under EN 12275,  
type B under prEN 362:2003, NFPA P and UIAA 121;  
Versions:  
-Straight  
-Bent  
-Screw  
Body:  
forged aluminium;  
Gate:  
Ø12 mm aluminium wire with key-lock closure;  
type screw with locking nut;  
Dimensions:  
102 mm x 64 mm;  
Marking:  
CE-marking; UIAA; NFPA-P; EN 362/B;  
serial number; kN 29-10-12; KONG;  
Weight:  
-Straight: 55 g  
-Bent: 56 g  
-Screw: 59 g

Page 2 of 3



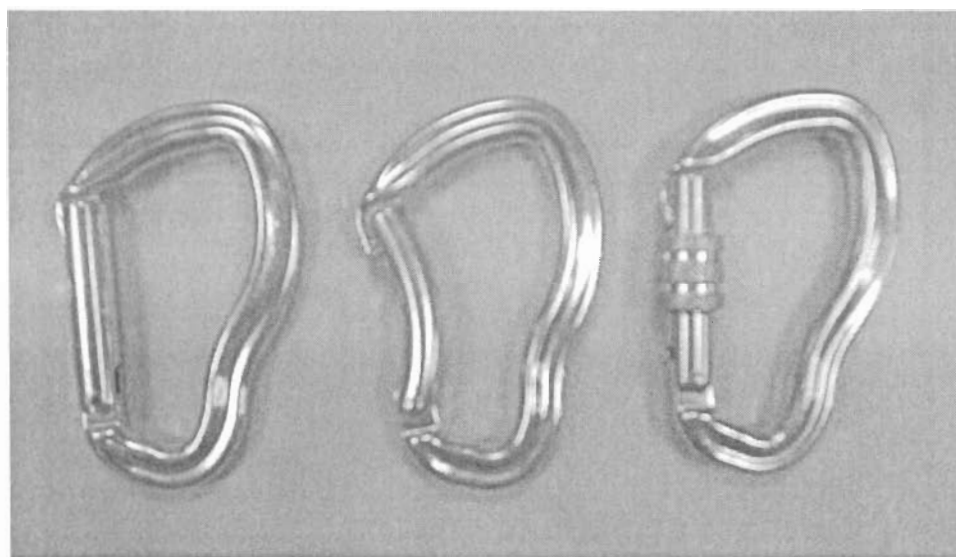
Product Service

Attachment for EC Type Approval Certificate

**Nr.: P5 04 10 23385 124**

Connector type **ERGO**

in the versions: **-Straight**  
**-Bent**  
**-Screw**



Department:  
Date:

TEC-SP/kn  
2004-10-18

Page 3 of 3